



MHD SPECIFICATIONS

The MHD is a completely hydraulic unit designed to provide more drilling capacity than comparably sized rigs. The easy to use controls and simplified design make the MHD more operator and mechanic friendly. This unit can be mounted on a 3 axle truck or crawler undercarriage. Made to drill up to 100 feet, the MHD combines the power, versatility, and efficiency needed to give you confidence on any job.

TECHNICAL SPECIFICATIONS

Maximum Pile Depth	100 feet	30.48 m
Maximum Pile Diameter	120 inches	3.04 m
Maximum Torque	43,000 ft./lbs.	58.29 kNm
Maximum rpm (low)	18 rpm	18 rpm
Maximum rpm (mid)	45 rpm	45 rpm
Spin off Speed	140 rpm	140 rpm
Main Winch	18,000 lbs.	80 kN
Service Winch	12,000 lbs.	53.33 kN
Transport Weight*	62,000 lbs.	31 tons
Fuel Tank	50 gallons	189 liters
Crowd	45,000 lbs.	199 kN
Engine-John Deere 6068 ⁺	185 hp	

* may vary depending on configuration and undercarriage

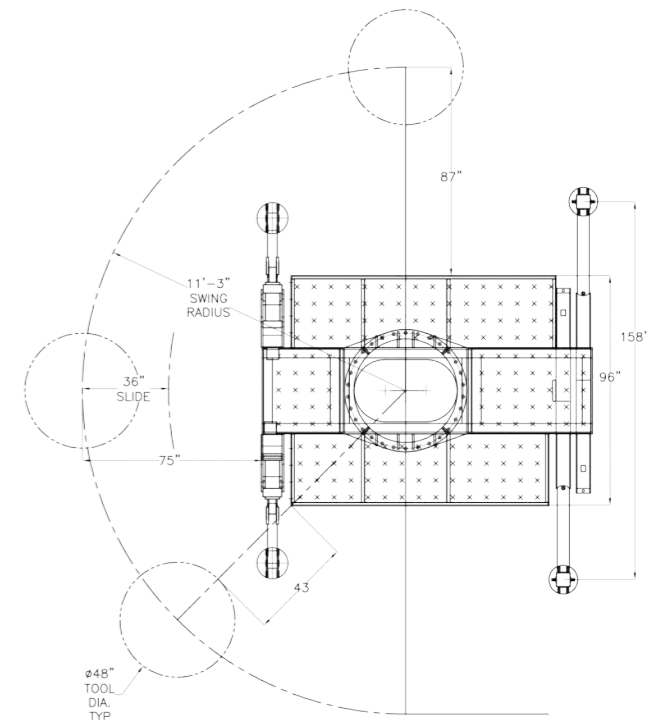
⁺ may vary depending on configuration and undercarriage

OPTIONAL EQUIPMENT

Digital Depth and Swing Position Readout

Enclosed Operator Cab

80' Drilling Depth option	(3 Bar, 4" x 6" x 8" square)
80' Drilling Depth option	(3 Bar, 4 1/2" x 7 1/4" x 9 1/2" round)
90' Drilling Depth option	(3 Bar, 4 1/2" x 7 1/4" x 9 1/2" round)
100' Drilling Depth option	(4 Bar, 3 1/2" x 5" x 7" x 9" square)



MHD-80

